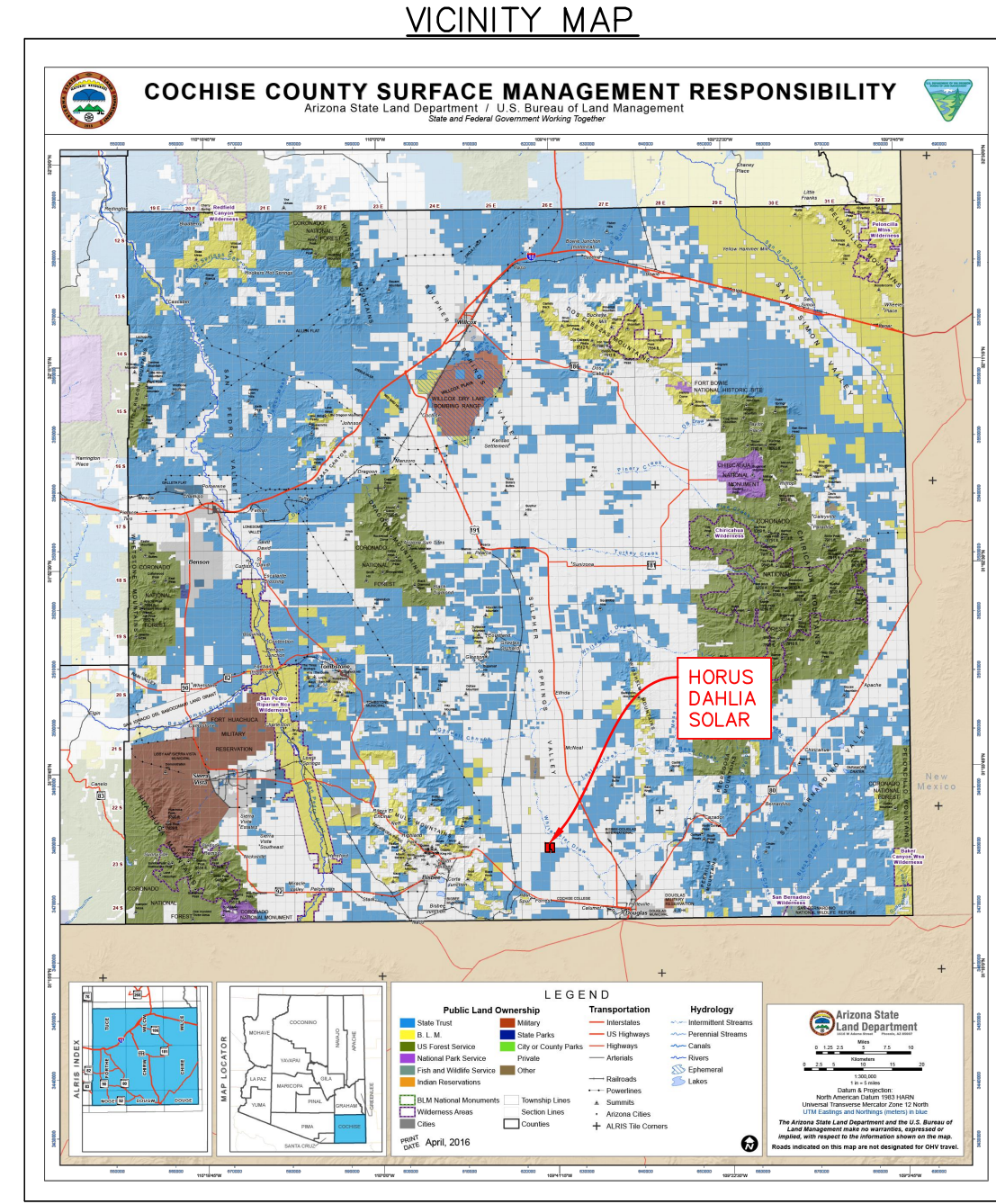


- GENERAL NOTES:**
- PROPERTY LINE BOUNDARIES WERE TAKEN FROM ALTA/NSPS LAND TITLE SURVEY OF HORUS DAHLIA SOLAR PREPARED BY BLEW INC. DATED: 02/12/2024.
 - THIS PROJECT CONSISTS OF THE DESIGN AND INSTALLATION OF A 83 MWAC (NAMEPLATE), 75 MWAC (POI) SOLAR PHOTOVOLTAIC SYSTEM. BIFACIAL PV MODULES 1 IN PORTRAIT ARE TO BE MOUNTED ON SINGLE AXIS TRACKERS, WHICH FOLLOW FROM EAST TO WEST THROUGHOUT THE DAY. INTERCONNECTION TO BE COORDINATED WITH LOCAL UTILITY.
 - PER FEMA FLOOD MAP 04003C2575F DATED 08/28/2008, SUBJECT PROPERTY IS NOT LOCATED IN A FLOOD HAZARD ZONE.
 - PROPOSED ACCESS POINTS AND ROAD IMPROVEMENTS ARE TO BE COORDINATED WITH HIGHWAY AUTHORITY.
 - THE PROJECT WILL COMPLY WITH ALL ZONING AND COCHISE COUNTY REQUIREMENTS.
 - LOCATIONS OF ALL PROPOSED FACILITIES ARE SUBJECT TO CHANGE DUE TO PERMITTING CONSTRAINTS, SITE CONDITIONS, EQUIPMENT SPECIFICATIONS AND UTILITY COORDINATION.



PROJECT SITE DETAILS

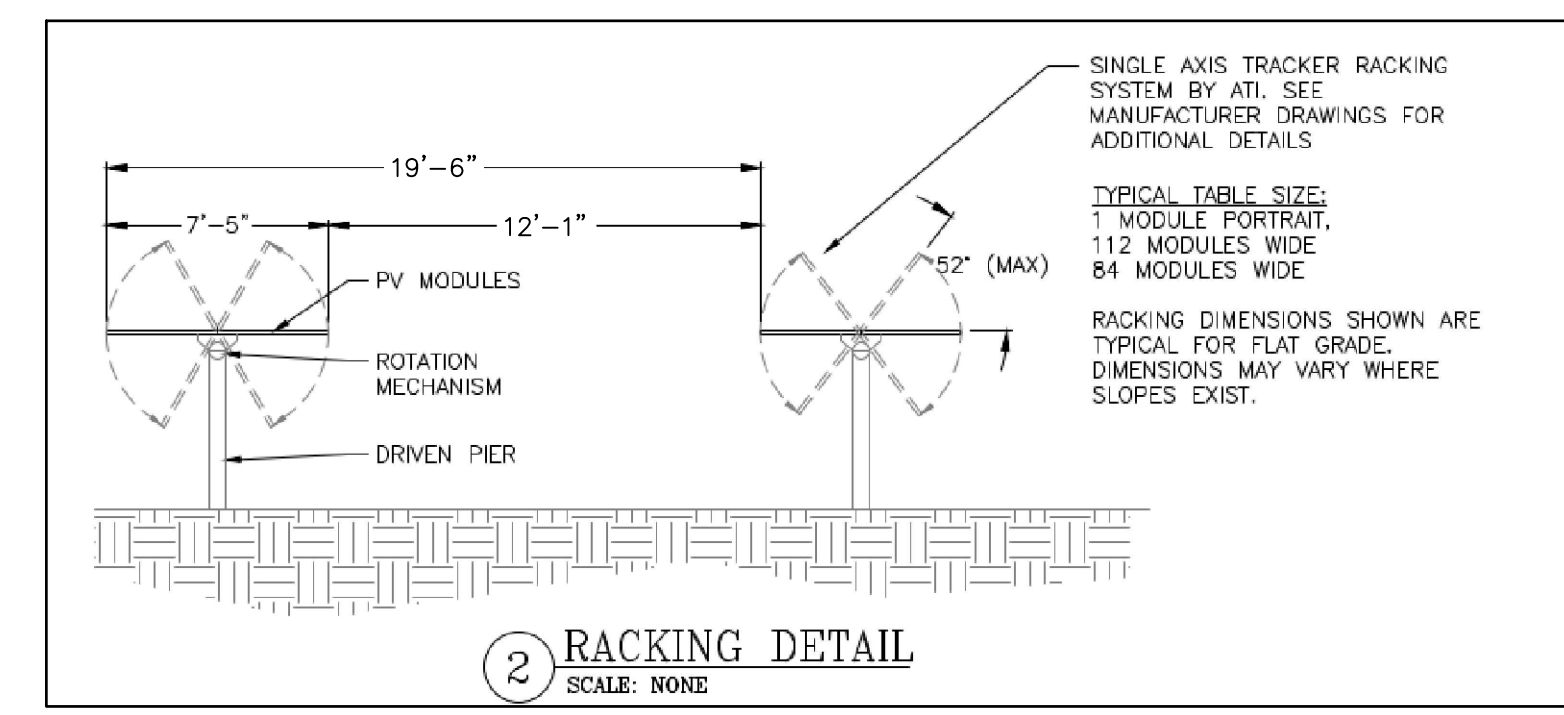
LATITUDE	31.442248
LONGITUDE	-109.692282
INTERCONNECTION VOLTAGE	34.5 kV AC
PROJECT AREA	596.595 ACRES
PARCEL ID'S	40717001, 40718003
OWNER	HORUS CAPITAL
EXISTING ZONING	RU-4 (RURAL ZONING)
EXISTING USE	N/A
PROPOSED USE	SOLAR PV GENERATION
FENCED AREA	±401.4 ACRES
FENCE LENGTH	±28,438 LF
16' ACCESS ROAD	±29,423 LF

PROJECT SITE DETAILS

AC SIZE- POI LIMIT (MWAC)	75.00
AC SIZE- NAMEPLATE (MWAC)	83.60
OVERBUILD %	111.47%
DC SIZE (MWDC)	105.49
AC POI VOLTAGE (kV)	34.5
DC VOLTAGE (VDC)	1500
AVERAGE DC/AC RATIO (NAMEPLATE)	1.26
AVERAGE DC/AC RATIO (POI LIMIT)	1.41
INVERTER OUTPUT VOLTAGE (V)	645 (INV) / 34.5k (XFMR)
(QTY) INVERTERS	(19) SUNGROW SG400UD-MV-US
(QTY) MODULES- TYPE 1	(193,564) JINKO JKM545M-72HL4-TV (545W BIFACIAL)
MODULES PER STRING	28
(TOTAL QTY) STRINGS	6,913
(QTY) 4-STR TABLE	1,636
(QTY) 3-STR TABLE	123
RACKING	ATI DURATRACK HZ (1P TRACKER)
AZIMUTH (DEG)	180
PITCH (FT/M)	19.52/5.95
MODULE ORIENTATION	PORTRAIT (1P)
RACKING ROTATION (DEG)	± 52
GROUND COVER RATIO	38.00%
NEC YEAR	2020

SITE DESIGN PARAMETERS

ASHRAE WEATHER STATION	BISBEE DOUGLAS INTL, AZ, USA (WMO: 722720)
MAX TEMPERATURE (°C)	35
MIN TEMPERATURE (°C)	-9.9



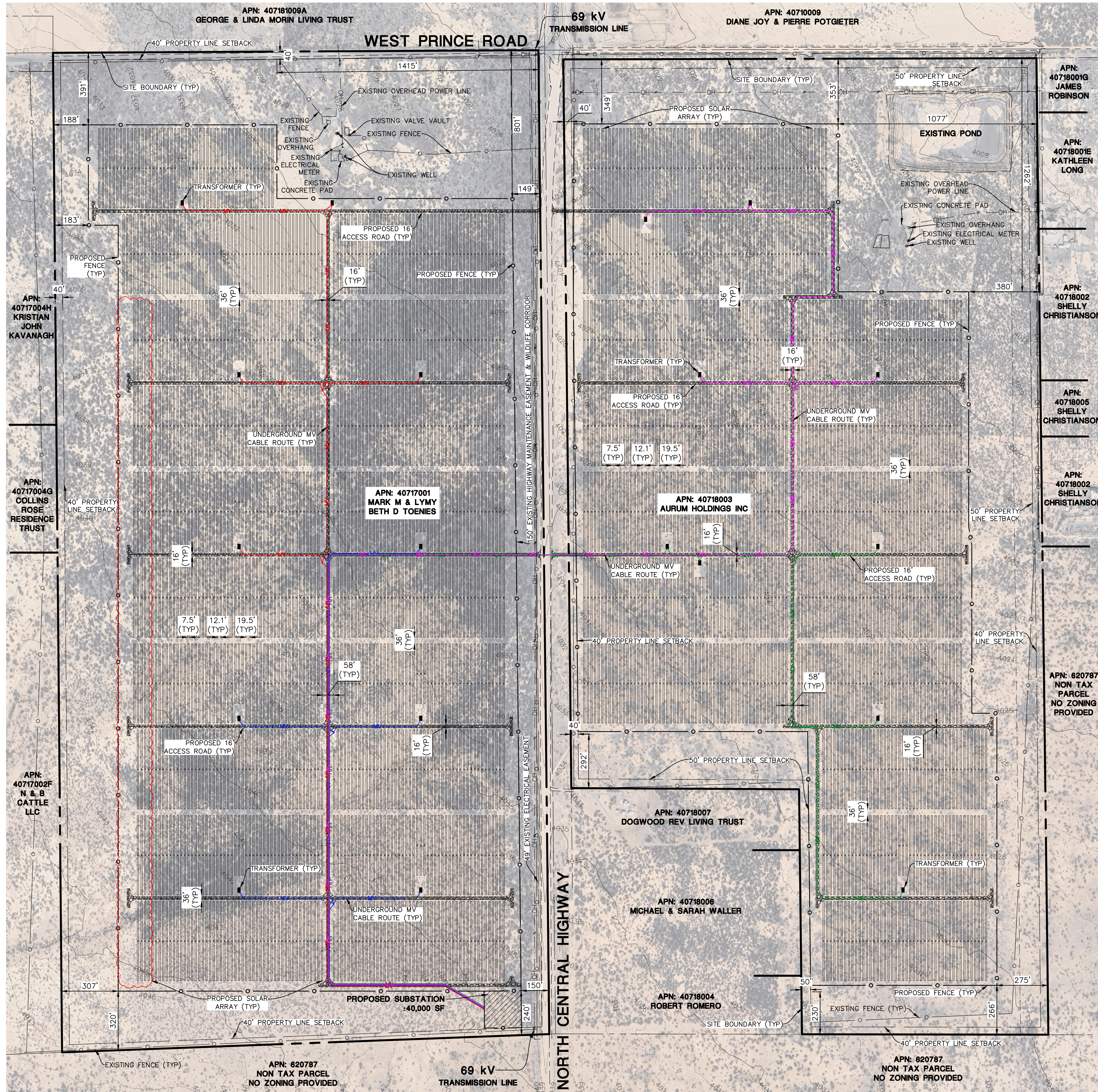
MANHARD CONSULTING
 CIVIL ENGINEERS • SURVEYORS • WEAR RESOURCE ENGINEERS • WIRELESS WEARWEAR ENGINEERS
 CONSTRUCTION MANAGERS • ENVIRONMENTAL SCIENTISTS • LANDSCAPE ARCHITECTS • PLANNERS

HORUS DAHLIA SOLAR
 COCHISE COUNTY, ARIZONA
 CONCEPT SITE PLAN

PROJ. MGR.: KJC
 PROJ. ASSOC.: MSP
 DRAWN BY: SB
 DATE: 8/20/2024
 SCALE: 1"=300'
 SHEET
EXH
 HOR.CCAZ01

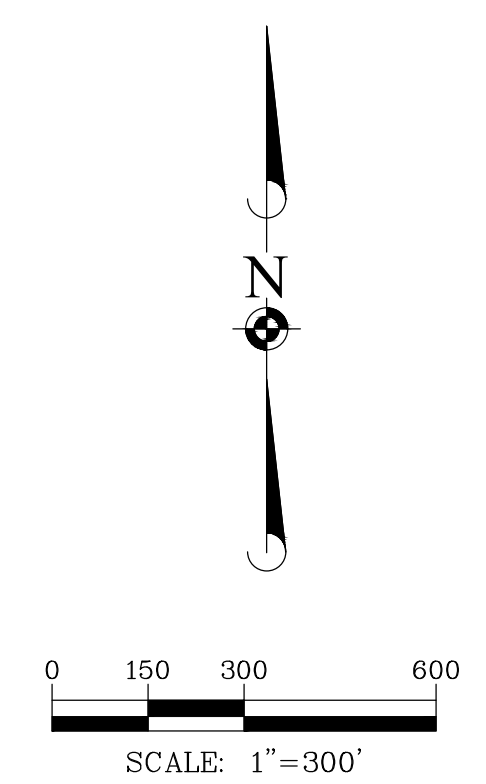
© 2024 MANHARD CONSULTING. ALL RIGHTS RESERVED.

NOT FOR CONSTRUCTION

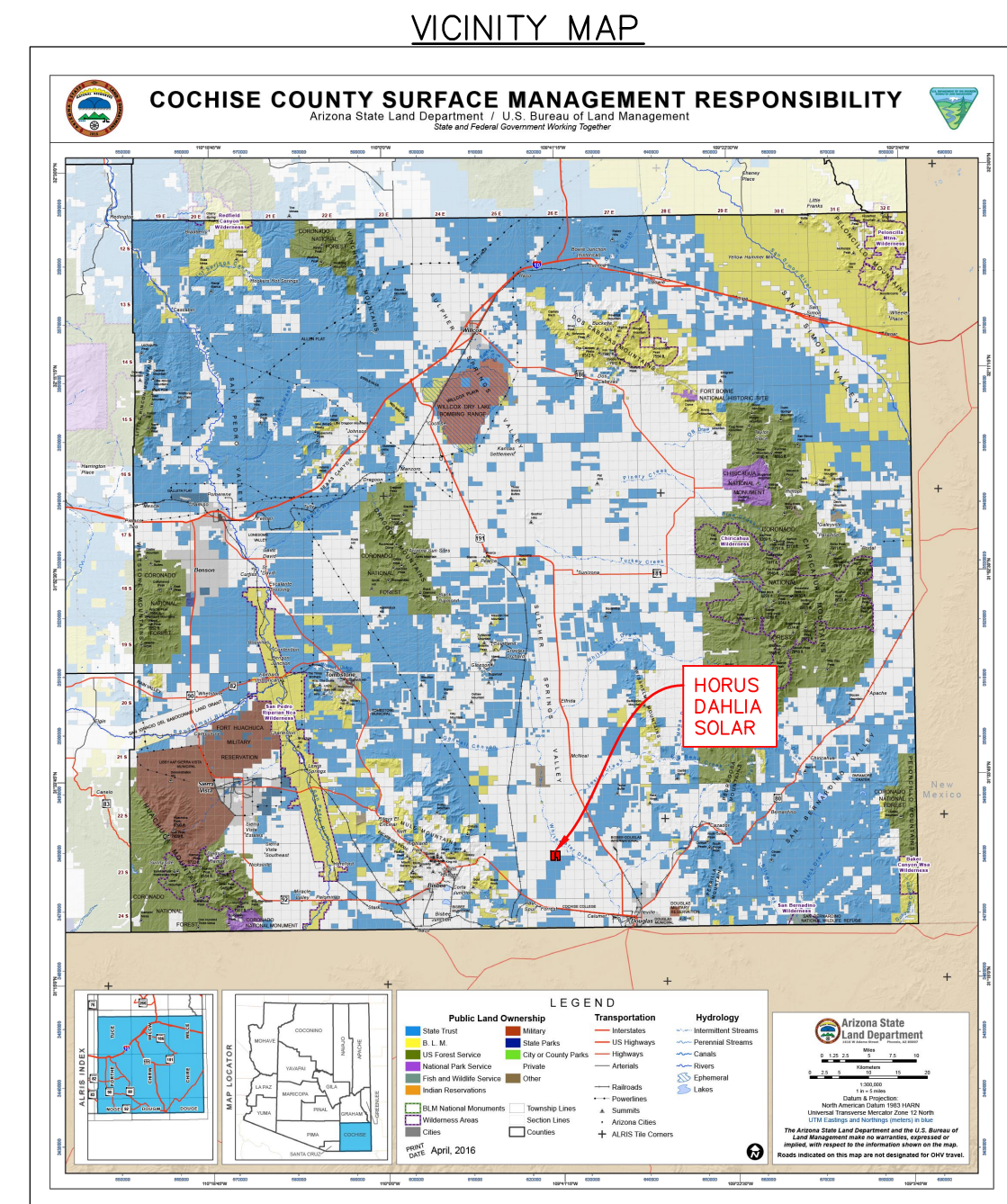


LINE TYPE LEGEND:

PROPOSED FENCE		MV FEEDER 100	
16' ACCESS ROAD		MV FEEDER 200	
SITE BOUNDARY		MV FEEDER 300	
		MV FEEDER 400	



- GENERAL NOTES:**
- PROPERTY LINE BOUNDARIES WERE TAKEN FROM ALTA/NSPS LAND TITLE SURVEY OF HORUS DAHLIA SOLAR PREPARED BY BLEW INC. DATED: 02/12/2024.
 - THIS PROJECT CONSISTS OF THE DESIGN AND INSTALLATION OF A 83 MWAC (NAMEPLATE), 75 MWAC (POI) SOLAR PHOTOVOLTAIC SYSTEM. BIFACIAL PV MODULES 1 IN PORTRAIT ARE TO BE MOUNTED ON SINGLE AXIS TRACKERS, WHICH FOLLOW FROM EAST TO WEST THROUGHOUT THE DAY. INTERCONNECTION TO BE COORDINATED WITH LOCAL UTILITY.
 - PER FEMA FLOOD MAP 04003C2575F DATED 08/28/2008, SUBJECT PROPERTY IS NOT LOCATED IN A FLOOD HAZARD ZONE.
 - PROPOSED ACCESS POINTS AND ROAD IMPROVEMENTS ARE TO BE COORDINATED WITH HIGHWAY AUTHORITY.
 - THE PROJECT WILL COMPLY WITH ALL ZONING AND COCHISE COUNTY REQUIREMENTS.
 - LOCATIONS OF ALL PROPOSED FACILITIES ARE SUBJECT TO CHANGE DUE TO PERMITTING CONSTRAINTS, SITE CONDITIONS, EQUIPMENT SPECIFICATIONS AND UTILITY COORDINATION.



PROJECT SITE DETAILS

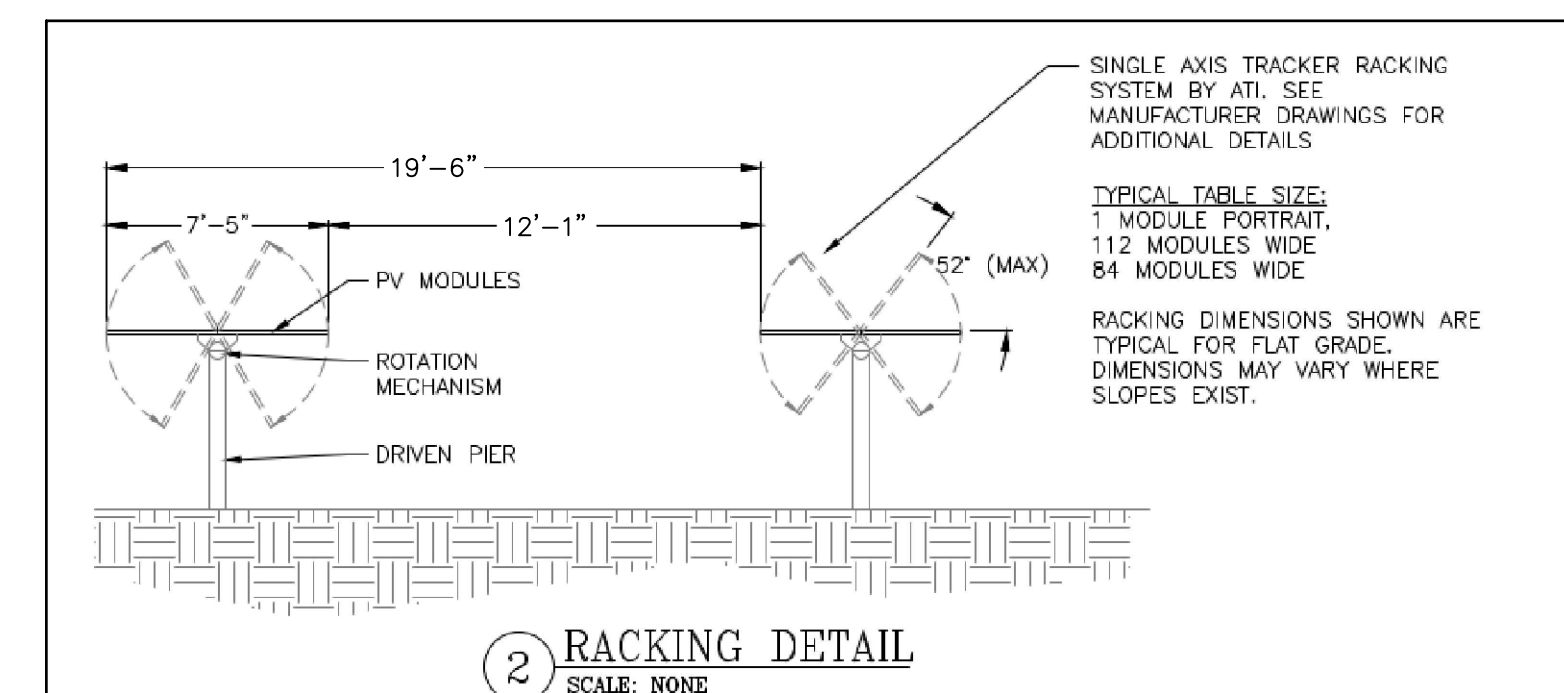
LATITUDE	31.442248
LONGITUDE	-109.692282
INTERCONNECTION VOLTAGE	34.5 kV AC
PROJECT AREA	596.595 ACRES
PARCEL ID'S	40717001, 40718003
OWNER	HORUS CAPITAL
EXISTING ZONING	RU-4 (RURAL ZONING)
EXISTING USE	N/A
PROPOSED USE	SOLAR PV GENERATION
FENCED AREA	±401.4 ACRES
FENCE LENGTH	±28,438 LF
16' ACCESS ROAD	±29,423 LF

PROJECT SITE DETAILS

AC SIZE- POI LIMIT (MWAC)	75.00
AC SIZE- NAMEPLATE (MWAC)	83.60
OVERBUILD %	111.47%
DC SIZE (MWDC)	105.49
AC POI VOLTAGE (kV)	34.5
DC VOLTAGE (VDC)	1500
AVERAGE DC/AC RATIO (NAMEPLATE)	1.26
AVERAGE DC/AC RATIO (POI LIMIT)	1.41
INVERTER OUTPUT VOLTAGE (V)	645 (INV) / 34.5k (XFMR)
(QTY) INVERTERS	(19) SUNGROW SG400UD-MV-US
(QTY) MODULES- TYPE 1	(193,564) JINKO JKM545M-72HL4-TV (545W BIFACIAL)
MODULES PER STRING	28
(TOTAL QTY) STRINGS	6,913
(QTY) 4-STR TABLE	1,636
(QTY) 3-STR TABLE	123
RACKING	ATI DURATRACK HZ (1P TRACKER)
AZIMUTH (DEG)	180
PITCH (FT/M)	19.52/5.95
MODULE ORIENTATION	PORTRAIT (1P)
RACKING ROTATION (DEG)	± 52
GROUND COVER RATIO	38.00%
NEC YEAR	2020

SITE DESIGN PARAMETERS

ASHRAE WEATHER STATION	BISBEE DOUGLAS INTL, AZ, USA (WMO: 722720)
MAX TEMPERATURE (°C)	35
MIN TEMPERATURE (°C)	-9.9



Manhard CONSULTING
 Civil Engineers • Surveyors • Wetland Resource Engineers • Wetland & Wetlands Engineers • Planners
 Construction Managers • Environmental Scientists • Landscape Architects

HORUS DAHLIA SOLAR
 COCHISE COUNTY, ARIZONA
 CONCEPT SITE PLAN

PROJ. MGR.:	KJC
PROJ. ASSOC.:	MSP
DRAWN BY:	SB
DATE:	8/20/2024
SCALE:	1"=300'
SHEET	EXH
HOR.CCAZ01	

© 2024 MANHARD CONSULTING, ALL RIGHTS RESERVED.

NOT FOR CONSTRUCTION